

1
2
3
4
5
6
7
8
9
10
11
12
13
14
15
16
17
18
19
20
21
22
23
24
25
26
27
28

MARIPOSA COUNTY RESOLUTION NO. 88-465

A RESOLUTION APPROVING SPECIFIC PLAN AMENDMENT NO. 87-2, M. HEINY, APPLICANT. A MAP AND TEXT AMENDMENT TO THE COULTERVILLE SPECIFIC PLAN.

WHEREAS, an application to amend the Specific Plan for the Coulterville Town Planning Area has been received and accepted by the County, and

WHEREAS, the Planning Commission has recommended approval of the application as evidenced by their resolution No. 88-14, and

WHEREAS, the Board of Supervisors is required by law to consider the amendment to the Specific Plan, and

WHEREAS, the Board of Supervisors has held a duly noticed public hearing as required by State Law and County regulations.

NOW THEREFORE BE IT RESOLVED that the Mariposa County Board of Supervisors hereby approves Specific Plan Amendment No. 87-2 which includes the amendment to the land use map as shown on Attachment A of this resolution and the following modification to the text of the Coulterville Town Planning Area Specific Plan.

Section VI A (1) Highway Service Commercial

Conditional Uses; Page 19

Add item g. as follows:

g. Tourist recreational vehicle or trailer parks and campgrounds.

1 BE IT FURTHER RESOLVED that this action is based upon the
2 findings contained in Planning Commission Resolution No. 88-14.


3 PASSED AND ADOPTED by the Mariposa County Board of
4 Supervisors this 13th day of September, 1988 by the following
5 vote:

6 AYES: Baggett, Radanovich, Taber, Dalton

7 NOES: Erickson

8 NOT VOTING: None

9 EXCUSED: None

10 
11 _____
ERIC J. ERICKSON, Chairman
Mariposa County Board of Supervisors

12 ATTEST:

13 
14 _____
MARGIE WILLIAMS, Clerk of the Board

15 APPROVED AS TO FORM AND LEGAL SUFFICIENCY

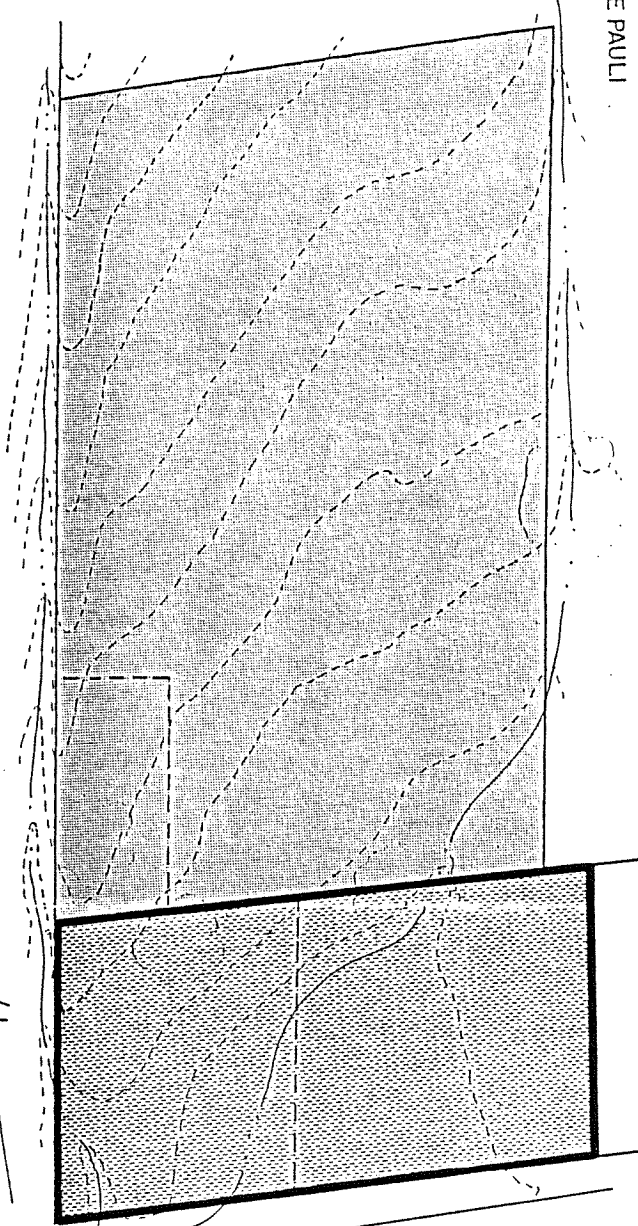
16 
17 _____
JEFFREY G. GREEN, County Counsel

18
19
20
21
22
23
24
25
26
27
28

ATTACHMENT "A"

DE PAULI

RILEY



BROADWAY AVE.

Maurice Heiny
Coulterville Specific Plan Amendment

Maurice F. Heiny, Property Owner
2621 Prescott Rd., No. 44
Modesto, CA, 95350
Community Concepts, Agent
P.O. Box 249
Mariposa, CA, 95338

Date Prepared: November 1987
Data Source: Community Concepts

Project Site Area: 1.47 Acres
APN 02-040-40 0.19 Acres
APN 02-040-41 0.25 Acres
Total Amendment Area: .44 Acres
From Light Commercial
To Highway Service Commercial

Portion of Section 34, Township 2 South, Range 16 East MDB&N
Portion of Block 12, Town of Coulterville

MAP NO. SPA 87-2
DATE RECD: 12-7-87
RECD BY: [Signature]
MARIPOSA COUNTY PLANNING DEPARTMENT
LOCATION MAP

Hwy. 49

SPECIFIC PLAN AMEND.

87-2

LIGHT COMMERCIAL

TO

HIGHWAY SERVICE COMMERCIAL

