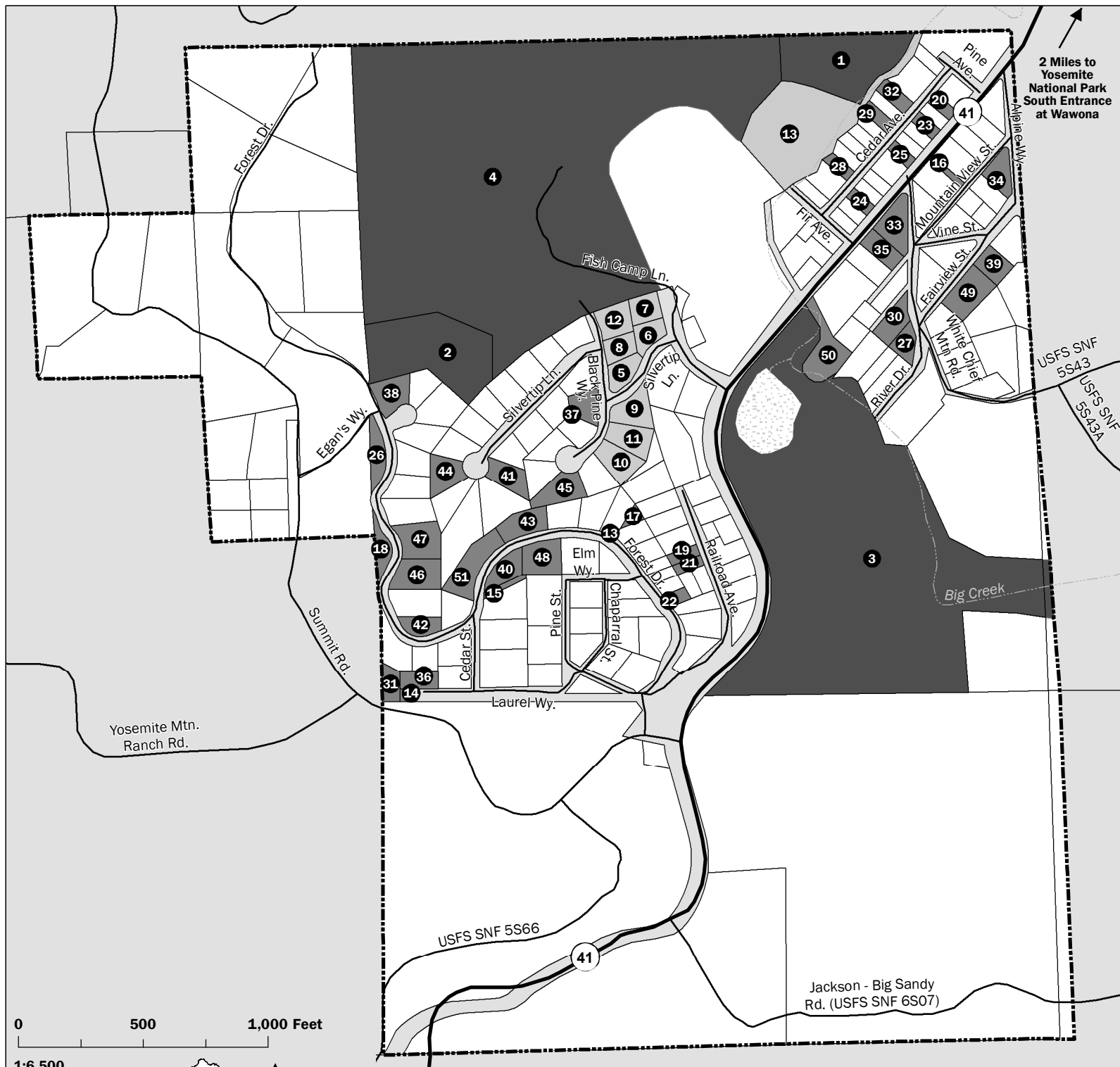


Figure 4-2 - Fish Camp TPA Developable Parcels



2 Miles to Yosemite National Park South Entrance at Wawona



Fish Camp Town Planning Area (TPA) Total Parcels: 52 Total Acres: +/- 82.99

- Multi Family Residential 5,500 ft² Minimum (9 Parcels)
- Single Family Residential .50 Acre Minimum (39 Parcels)
- Single Family Residential 1 Acre Minimum (4 Parcels)
- Excluded Parcels Parcels developed to their potential, Resort Commercial, and General Forest
- Fish Camp Town Planning Area

Date: April 25, 2014
 Source: Assessor's Parcel Map March 2014 & Fish Camp TPA Zoning

MARIPOSA COUNTY
 Mariposa County Planning Department
 PO BOX 2039
 5100 Bullion Street
 Mariposa, California 95338-2039
 209.966.5151 FAX 209.742.5024
 mariposaplanning@mariposacounty.org
<http://www.mariposacounty.org/planning>