



2001 Creek Fire | Mariposa and Tuolumne Counties

**WHAT CAN YOU DO TO
PREPARE YOUR HOME,
FAMILY, ANIMALS, AND
PROPERTY TO HELP
SURVIVE A FIRE
EMERGENCY IN
MARIPOSA COUNTY?**

**The information inside will help you
GET READY, SET, and GO!**

ARE YOU FIRE READY?

- 1. Prepare and get ready early
- 2. Prepare your home for embers
- 3. Prepare for evacuation advisories
- 4. Evacuation checklist
- 5. Keeping your animals safe
- 6. What to do if you become trapped
- NIXLE and SAFE information (located on insert)
- Local resources available during emergencies (located on insert)



Visit us at www.mariposafiresafe.net



*** PLEASE KEEP A COPY OF THIS EMERGENCY PREPAREDNESS BROCHURE IN YOUR CAR OR HOME ***

MARIPOSA COUNTYWIDE

1. PREPARE AND GET READY EARLY:

- ◆ Plan more than one escape route from your home and community by car and by foot.
- ◆ Make arrangements for the shelter of your pets and/or livestock prior to an emergency.
- ◆ Create and maintain your 100' DEFENSIBLE SPACE around your home and other permanent structures on your property.
- ◆ Have fire extinguishers on hand and ensure that your family is trained on the use of them.
- ◆ Ensure that your family knows where the main shutoffs for your gas, electric and water are and that they know how to use them.
- ◆ Create and maintain an emergency contact list of numbers and keep it posted near your phone and in your emergency kit.
- ◆ Appoint an out-of-area friend or relative as a point of contact, so you can communicate with family members who have relocated.
- ◆ Keep an extra emergency supply kit in your car in the event that you cannot get to your home.
- ◆ Prepare a FAMILY EVACUATION KIT that includes the following:
Three changes of clothing, footwear, a sleeping bag or blanket per person, a three day supply of food, first aid kit that includes any prescription medications, flashlight, extra car keys, credit cards, cash, wills, insurance information, deeds, stocks, important family documents, social security cards, immunization records, bank account numbers, special items needed for infants, elderly or disabled family members, sanitation supplies, inventory list of valuable household items, and important phone numbers.

You can have this...



OR

You can have this...



THE CHOICE IS YOURS!

2. EMBER AWARENESS CHECKLIST- (Embers are the number one cause of structure loss during a wildland fire)

Wood Roof - Replace wood roofing with fire resistant types such as composition, metal and tile.

Roof Openings - Plug openings in roof, such as open ends of barrel tiles, with non-combustible materials.

Roof Debris - Routinely remove pine needles, leaves, branches, and bark from the roof.

Skylights - Replace plastic skylights with double pane glass. One pane should be tempered glass. Close skylight if fire is threatening home.

Spark Arrester - Install an approved spark arrester on chimneys and stovepipe.

Windows - Close all windows if fire is threatening home.

Vents - Cover attic and foundation vents with 1/8 inch wire mesh. If wildfire is approaching, consider covering vents with pre cut plywood or aluminum foil to prevent ember intrusion.

Rain Gutters - Keep rain gutters clear of debris

Siding - Fill gaps in siding and trim materials with good quality caulk and replace poor condition building material.

Patio Furniture - Place combustible patio furniture, such as lounges, tables, hammocks, inside garage/house if wildfire is threatening.

Deck Boards - Replace deck boards that are less than one inch thick or that are in poor condition. Use metal flashing between the deck and the house.

Deck Debris - Remove debris (pine needles, leaves) from between deck boards and house, and lying on top of deck.

Porch and Deck Accessories - If wildfire is threatening, remove combustible materials from the porch and deck including newspaper, baskets, door mats, pine cones, dried flower arrangements, and place BBQ propane tanks indoors.

Under the Deck - Remove debris (pine needles, weeds, leaves) wood piles, and other easily ignited materials from under decks.

Wood piles - Keep firewood stacks and lumber 30 ft. from structures.



Eaves - Cover open eaves with sheathing such as plywood or fiber-cement board. Use tongue and groove joints or other intricate joint types, and do not use butt joints.

Flowerbeds - Replace wood mulches with noncombustible types, remove dead debris (weeds, leaves, pine needles) from the flowerbeds next to the house, other buildings, and next to any wooden fences. Replace ornamental junipers with low-growing deciduous shrubs, flowers with irrigation.

Vehicles - Close vehicle windows. Back into the garage and close the garage door or park away from the house.

Garage Door - Adjust garage doors to achieve as tight a fit as possible with the door frame. Consider using trim around the garage door opening to reduce the size of gap openings. Close the garage door if wildfire is threatening.

Garbage Cans/Containers and Recycling Bins - Use garbage cans covered with tight fitting lids near the house or other building. Move newspaper recycling bins indoors.

Wooden Fences - Maintain wooden fences in good condition and create noncombustible fence section or gate next to the house for at least 5-10 feet.

Stay connected to the information that matters most to you!

RECEIVE UP-TO-DATE INFORMATION AFFECTING YOUR COMMUNITY
VOICE CALL, E-MAIL & TEXT MESSAGE!



The Emergency Notification Systems is used to send critical communications including Alerts, Advisories, Warnings & Immediate Threat Orders.

**To Register: Visit our website www.mariposacounty.org/sheriff
or visit www.Nixle.com**

FIRE EMERGENCIES: A MESSAGE FROM THE SHERIFF

Emergencies can strike anyone, anytime and anywhere. You and your family members could face a situation where evacuating from your home is necessary for your safety.

It is paramount that we as caring community members do plan for emergencies and possible evacuations. This planning should involve and incorporate everyone in the household including large and small animals.

The Mariposa County Sheriff's Office works closely with our Public Safety partners to ensure that evacuations are as smooth and efficient as possible. This helps the firefighting professionals focus on fighting the fire, and keeps community members from falling into harm's way.

Thank you for your cooperation and support of the Public Safety mission. - Sincerely, Sheriff Doug Binnewies

LOCAL COUNTY RESOURCES:

- **Emergency Information Line: 1-800-966-1133**
(updates provided during active emergencies or disasters)
- **www.mariposagazette.com** (breaking news updates)
- **www.mariposacounty.org/emergencyinfo**
- **[Facebook.com/CALFIRE](https://www.facebook.com/CALFIRE)**

LOCAL FIRE RESOURCES:

California Department of Forestry and Fire Protection (CAL FIRE)

MMU Headquarters
5366 Hwy 49 North, Mariposa
209-966-3622 or 911

Mariposa County Fire (MCFD)

Administrative Office
5082 Bullion Street, Mariposa
209-966-4330

U.S. Forest Service (USFS)

Jerseydale Forest Station
6440 Jerseydale Road, Mariposa
209-966-2477 or 559-877-2218

ABC 30 ACTION NEWS



www.abc30.com



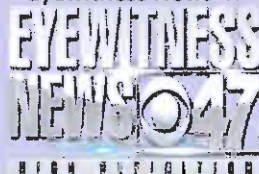
UNIVISION



univisionfresno.com



Eyewitness News 47



yourcentralvalley.com



KSEE 24



www.ksee24.com

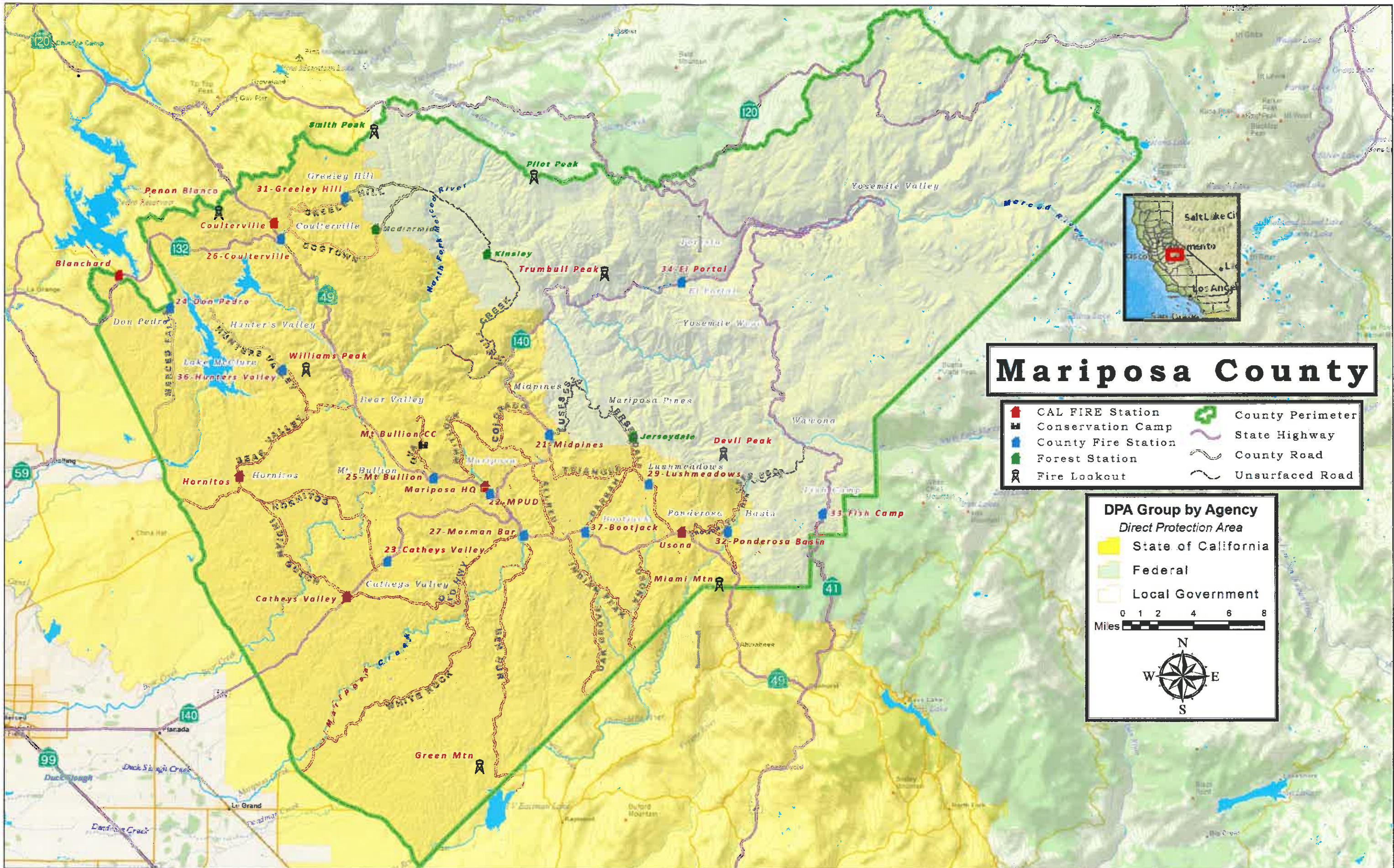


KMPH FOX 26



www.kmph.com





Mariposa County

- CAL FIRE Station
- Conservation Camp
- County Fire Station
- Forest Station
- Fire Lookout
- County Perimeter
- State Highway
- County Road
- Unsurfaced Road

DPA Group by Agency
Direct Protection Area

- State of California
- Federal
- Local Government

0 1 2 4 6 8
 Miles

HELPFUL TIPS:

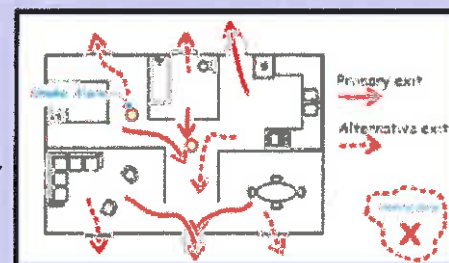
Prepare your family and your home for POWER OUTAGES:

- Have a corded phone in your house. Please note that cordless phones WILL NOT work when the power is out!
- Have flashlights readily available if power goes out.
- Keep candles away from flammable items when using them for light.
- In the event that your cooler is powered by electricity, try to stay cool by drinking plenty of water to stay hydrated, take cool baths or showers in extreme heat, and check with local authorities on possible cooling center locations that you may go to. Keep your pets cool as well with ensuring that they have cool fresh water to drink.
- In the event that your heater is powered by electricity, try to stay warm by wearing warm layers of clothing and cover your ears, face, hands, and feet. If your clothing gets wet, be sure to change out of them and put on dry warm clothing.

* For more helpful tips on preparing for power outages call PG&E at 1-800-743-5000 or visit www.pge.com *

Create an escape plan for your family in the event of a HOUSE FIRE:

- Identify escape routes within the home.
- Install smoke detectors throughout your home and test the batteries every 4-6 months.
- Know what to do when the smoke detectors signal that there may be a fire in your house.
- Identify a special meeting place where your family will meet once they are out of the home.
- Make sure everyone in the home has a copy of the escape plan and are aware of the details of the plan.
- Escape first, then call 911. Once you are out, STAY OUT!



(Example of family escape plan)

Under No circumstances should you ever go back into a burning building.

* Visit www.readyforwildfire.org for more helpful information on fire education*

Mariposa County SAFE Program:



The SAFE Program has been developed to identify your special needs in the event of an emergency or disaster in Mariposa County. The valuable information that you provide will enable us to assist you during such an event. When you register in the Mariposa County SAFE Program, it enables Mariposa County Emergency Response Agencies to assist you during emergency events such as: Fires, Floods, Extreme

Weather Events, Landslides, Earthquakes, Extended Energy Outages, Hazardous Materials Incidents, as well as Civil Disruptions. You can register for the program by completing an application and submitting it to the Mariposa County Health Department. All information provided to the Mariposa County Health Department is confidential and will only be used to assist you during an emergency event.

For more information on the SAFE program please scan the QR code or visit:
www.mariposacounty/emergencyinfo OR www.mariposacounty.org/health



3. EVACUATION ADVISORIES TO BE PREPARED FOR:

Evacuation Advisory

Issued alert to media and public of potential evacuation orders. Contains general information of the incident and how to prepare.

Evacuation Warning

Issued alert when an evacuation order is eminent. Affected population is to prepare to evacuate and be ready to immediately evacuate at notice. Affected population to wait for further instructions.

Immediate Evacuation Order

Issued when there is a recognized immediate threat to life. Choosing to stay at your residence after an evacuation order has been issued may result in loss of life and potentially impede the work of emergency personnel.

Shelter in Place

Advises people to stay secure at their home or current location by remaining in place as evacuation will cause a higher risk to loss of life.

Rescue

Emergency operations taken within the affected area to recover and assist injured or trapped residents in leaving the evacuation area.

Lifting Evacuation Advisories (Return/Re-Entry) -

After the risk of potential loss of life and property have been mitigated and the Incident Commander (IC) deems it safe to do so, the declaration of re-entry shall be broadcasted. Priority and process for re-entry will be at the discretion of the IC and the Sheriff with top priority given to the overall safety of the incident.



RIM Fire—2013

Al Golub/Golub Photography

4. EVACUATION CHECKLIST: WHAT WILL YOU TAKE?

Evacuation Order

5 Minutes to Evacuate:

- Purse, credit cards, checkbook, cash, keys, vehicle, RV, boat, safe deposit.
- Pets, Pet Crates, Pet Leashes, Pet Food.
- Medication and prescriptions.
- Glasses, contact lenses, hearing aids.
- Cell phones, PDS' s, chargers.
- Multiple days of clothing, including sturdy walking shoes or boots
- Planning calendar, phone, address, Christmas lists, bills, payment coupons.
- Laptop

Evacuation Order

15-30 Minutes to Evacuate:

- Passports, insurance information
- Important documents, such as financial information, birth certificates, insurance policies, social security cards, vehicle registration.
- Photo albums and family videos.
- Camera with extra batteries
- High value items such as jewelry or antiques
- Any items in which you consider to be irreplaceable.
- Remove flammable materials from deck/porch, including door mats, patio furniture, etc.

Evacuation Order

2+ Hours to Evacuate:

- Confine your pets to one room so they will be readily available when the time comes to evacuate. Make plans ahead of time to care for your pets in case you must evacuate. Contact the local animal control, kennel, or friends, etc.
- Items that you consider to be irreplaceable.
- Computer.
- High priority hobby items including boats, quads, etc.
- Move extra vehicles to vegetation free/fire safe area.
- Memorabilia
- Clean up or remove items that are flammable from your porch, patio or next to house.

PRE FIRE SEASON ANNUAL PREPERATION

November to May

- Create and maintain your 100 feet DEFENSIBLE SPACE around your home and other permanent structures on your property.
- Check your home and other permanent structures on your property for places where embers or heat will enter your home.
- Take photos of each room in your house for insurance purposes.
- Make copies of important papers and keep them safe by storing them in a fire safe box/safe.
- List of items to be removed in the event of being evacuated, including and precautions or evacuation advisories.
- Create a virtual meeting place where all members can make contact in an emergency.

FOR MORE INFORMATION ON EVACUATION PREPAREDNESS VISIT: www.readyforwildfire.org

3. EVACUATION ADVISORIES TO BE PREPARED FOR:

Evacuation Advisory

Issued alert to media and public of potential evacuation orders. Contains general information of the incident and how to prepare.

Evacuation Warning

Issued alert when an evacuation order is eminent. Affected population is to prepare to evacuate and be ready to immediately evacuate at notice. Affected population to wait for further instructions.

Immediate Evacuation Order

Issued when there is a recognized immediate threat to life. Choosing to stay at your residence after an evacuation order has been issued may result in loss of life and potentially impede the work of emergency personnel.

Shelter in Place

Advises people to stay secure at their home or current location by remaining in place as evacuation will cause a higher risk to loss of life.

Rescue

Emergency operations taken within the affected area to recover and assist injured or trapped residents in leaving the evacuation area.

Lifting Evacuation Advisories (Return/Re-Entry) -

After the risk of potential loss of life and property have been mitigated and the Incident Commander (IC) deems it safe to do so, the declaration of re-entry shall be broadcasted. Priority and process for re-entry will be at the discretion of the IC and the Sheriff with top priority given to the overall safety of the incident.



Rim Fire—2013

Al Golub/Golub Photography

4. EVACUATION CHECKLIST: WHAT WILL YOU TAKE?

Evacuation Order

5 Minutes to Evacuate:

- Purse, credit cards, checkbook, cash, keys, vehicle, RV, boat, safe deposit.
- Pets, Pet Crates, Pet Leashes, Pet Food.
- Medication and prescriptions.
- Glasses, contact lenses, hearing aids.
- Cell phones, PDS' s, chargers.
- Multiple days of clothing, including sturdy walking shoes or boots
- Planning calendar, phone, address, Christmas lists, bills, payment coupons.
- Laptop

Evacuation Order

15-30 Minutes to Evacuate:

- Passports, insurance information
- Important documents, such as financial information, birth certificates, insurance policies, social security cards, vehicle registration.
- Photo albums and family videos.
- Camera with extra batteries
- High value items such as jewelry or antiques
- Any items in which you consider to be irreplaceable.
- Remove flammable materials from deck/porch, including door mats, patio furniture, etc.

Evacuation Order

2+ Hours to Evacuate:

- Confine your pets to one room so they will be readily available when the time comes to evacuate. Make plans ahead of time to care for your pets in case you must evacuate. Contact the local animal control, kennel, or friends, etc.
- Items that you consider to be irreplaceable.
- Computer.
- High priority hobby items including boats, quads, etc.
- Move extra vehicles to vegetation free/fire safe area.
- Memorabilia
- Clean up or remove items that are flammable from your porch, patio or next to house.

PRE FIRE SEASON ANNUAL PREPERATION

November to May

- Create and maintain your 100 feet DEFENSIBLE SPACE around your home and other permanent structures on your property.
- Check your home and other permanent structures on your property for places where embers or heat will enter your home.
- Take photos of each room in your house for insurance purposes.
- Make copies of important papers and keep them safe by storing them in a fire safe box/safe.
- List of items to be removed in the event of being evacuated, including and precautions or evacuation advisories.
- Create a virtual meeting place where all members can make contact in an emergency.

FOR MORE INFORMATION ON EVACUATION PREPAREDNESS VISIT: www.readyforwildfire.org

5. KEEP YOUR ANIMALS SAFE BEFORE, DURING AND AFTER EVACUATION:

- ◆ Make your pets collar ID tags with Name, Owner, and Phone Number. If able to, have your pets micro-chipped with this info.
- ◆ Identify a safe place to safely house your animals in the event of evacuation (kennel, friends/families house, volunteer center, etc.)
- ◆ Keep carriers near your residence to quickly kennel your animals in the event of immediate evacuation.
- ◆ Make plans ahead of time for neighbors, friends or family to help remove your animals in the event that you are not home at the time of the evacuation order or emergency.
- ◆ Please remember: If it isn't safe for you, it isn't safe for your pets. Even if you think you will only be gone for a few hours, take your pets. You have no way of knowing how long you'll be kept out of the area, and you may not be able—or allowed—to go back for your pets.
- ◆ Pets left behind in a disaster can easily be injured, lost, or killed. Those left inside your home can escape through storm-damaged areas, such as broken windows. And pets turned loose to fend for themselves are likely to become victims of exposure, starvation, predators, contaminated food or water, or accidents. Leaving dogs tied or chained outside in a disaster is a death sentence.



RSM Fire - 2013
Al Gouib/Goluk Photography



PLEASE REMEMBER... IF WE CANNOT FIND YOU, WE CANNOT HELP YOU!

Make sure that your address is clearly marked with 4 inch numbers and of a contrasting color to the sign's background at the base of your driveway. The reflective address signs can be purchased at most hardware stores and through the Mariposa County Sheriff's Office SCOPE program.



6. WHAT TO DO IF YOU BECOME TRAPPED WHILE IN YOUR HOME:

- ◆ Call 911 and alert authorities to your location.
- ◆ Stay calm and keep your family together.
- ◆ Place wet towels under doors to keep smoke and embers out.
- ◆ Stay away from outside walls and windows
- ◆ Keep doors and windows closed, but unlocked.
- ◆ Ensure that you can exit the home if it catches fire. (remember if it's hot inside the house, it is much hotter outside).
- ◆ Patrol inside your home for spot fires and extinguish them.

WHAT TO DO IF YOU BECOME TRAPPED WHILE IN YOUR CAR:

- ◆ Stay calm.
- ◆ Park your vehicle in an area clear of vegetation.
- ◆ Close all windows and vents.
- ◆ Cover yourself with wool blanket or jacket.
- ◆ Lie on the vehicles floor.
- ◆ Use your cell phone Call 911 and alert authorities of your location.

WHAT TO DO IF YOU BECOME TRAPPED WHILE ON FOOT:

- ◆ Stay calm.
- ◆ Get to an area that is clear of vegetation; if possible a rock cropping, creek bed or ditch.
- ◆ Lie face down and cover up.
- ◆ Use your cell phone to alert authorities to your location.



US Forest
Service Fire/
Aviation



Mariposa Co.
Sheriff's Office



Mariposa Co.
Fire Dept.



California
Dept. of Forestry
and Fire



Yosemite
National
Park



Bureau of Land
Management
Mother Lode
Field Office



Mariposa
County



Pacific Gas
and Electric